



Verband Deutscher  
Metallhändler e. V.



## Metal theft – Metal traders perspective

Pol-PRIMETT Meeting 15.07.2015, Berlin

**Ralf Schmitz**

German Federation of Metal Traders (VDM)  
CEO

Office: Hedemannstraße 13 D 10969 Berlin [schmitz@vdm.berlin](mailto:schmitz@vdm.berlin)

European Office: Square Ambiorix 43 B 1000 Brussels [europa@metallhandel-online.com](mailto:europa@metallhandel-online.com)

Working group Metals Austria: Lothringer Straße 12 A 1031 Vienna [austria@metallhandel-online.com](mailto:austria@metallhandel-online.com)

**[www.vdm.berlin](http://www.vdm.berlin)**



## Introduction - Data

### **1907**

Foundation of the association

### **2006**

Representation in Brussels

### **2013**

Working group Metals Austria

### **Members**

approx. 220

### **Offices / Branches**

approx. 700

### **Market coverage GER/AUT**

approx. 80 %

### **Turnover p. a.**

approx. EUR 30bn

### **Employees**

approx. 25.000





# Introduction - Fields of expertise

## Virgin metals

production

trade  
(import <> export)

London Metal Exchange



## Recycling industry

recording

processing

trade  
(import <> export)

production



## Special metals

minor metals

rare earth elements

ferroalloys

production  
trade  
processing



## Semi-finished products



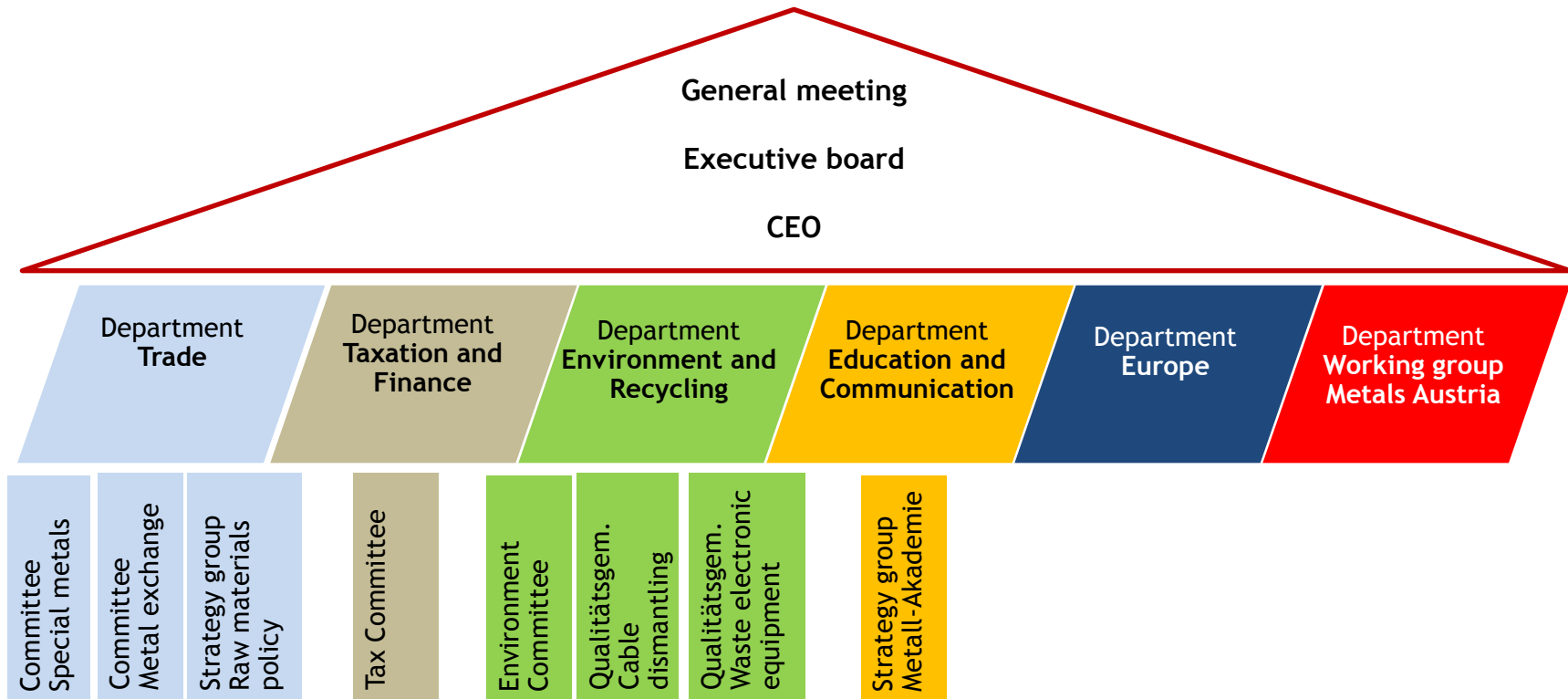
Wirtschaftsverband  
Großhandel  
Metallhalbzeug e.V.

partner since 1948





## Introduction – Organization chart





## Issues

### Theft

- metal theft from company grounds (warehouses)
- offers of stolen goods

### Fraud

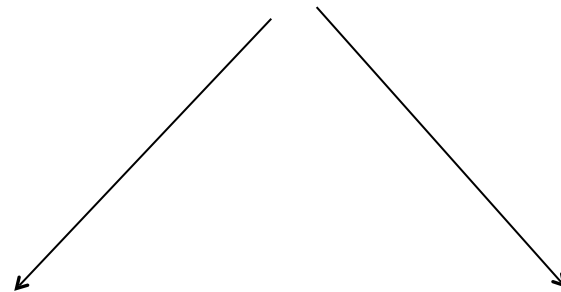
- fictitious delivery
- wire fraud
- impurities
- dummy companies

### Tax law

- liability for unpaid taxes (culpability)
- refusal of input tax deduction
- refusal of tax exemption for intra-community deliveries



## Focus areas



serious financial losses

risk of purchasing stolen  
goods

survey among members:  
about EUR **500.000 per month!**



Verband Deutscher  
Metallhändler e. V.



## Foundation of SIPAM



Sicherheitspartnerschaft  
gegen Metalldiebstahl



**SIPAM Germany**  
Berlin, 06.07.2012

- Deutsche Bahn AG
- Deutsche Telekom AG
- RWE
- Verband Deutscher Metallhändler e.V.



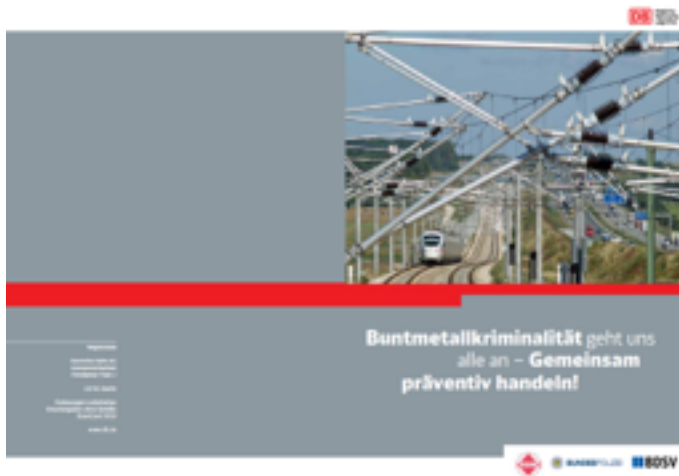
**SIPAM Austria**  
Vienna, 15.05.2014



**MEMORANDUM  
Poland**  
Warsaw, 27.11.2014



# What we do



## Activity VDM

- newsletters
- 2013: trial „artificial DNA“
- 2013/14: Code of Conduct for metal traders
- 2014: VDM guideline: risk management for metal purchases „Wir HANDELN!“
- 2014: website launch (SIPAM)
- 2015: trainings on metal theft prevention
- 2016: additional criteria will be implemented for the certification of waste management companies

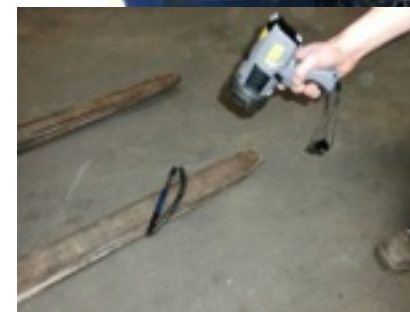






## Artificial DNA

### application of „artificial DNA“



# Risk management for metal purchases

Wir  
**HANDELN!**

Augen auf beim Metallkauf  
Handlungsempfehlungen des VDM

### Checkliste für den Metalleinkauf.

Material	Erfolgsreihe Lieferant	Privat Kleinmenge	Privat > 30 kg	kl. Metallhändler aus der Region < 70km &	kl. Metallhändler fahrend nicht ortsnah &	kl. Metallhändler Platz am Standort	Große Metallhändler	Ermsorgungskette/ehmes Fräktcher	Kabelverwerter m. Anlage	Industrie	Bahn Post EVU etc.	Baufirmen	Fach - Handwerker / Betrieb	Uingewerbe allg.
Installationsware Armaturen etc. alt.														
Kabel Haustechnik														
Kabel dick > 16mm²														
Kabel Bahn - Post etc.														
Kupferdrähte dünn														
Kupferdrähte dick Millberry etc.														
Friedhofsteile Statuen, Laternen etc.														
Kupfer Dach, Rinnen, Bohre alt / neu														
Kupfer o. Alu - granulat														
Industrieabfälle Späne, Stanzeile														
Produktionsabfälle														
Aluselle, Aldehy Leitungen														
Kupferselle Freileitungen														
Schlacken Krätze etc.														
Barren u. Blöcke														
Große Menge neue Ware Blech, Draht														
Neuware allgemein														
Leiterplatten Zerlegung neu alt														
Kathoden														
Offsetplatten Alu														
Bauteile Post - Bahn etc. m. Aufdruck														

**Generell ist bei neuer Ware und Industriematerial immer eine Schmelzprobenerhebung durchzuführen.**  
Die Identität und Legalität des Verkäufers ist zu überprüfen und gegebenenfalls zu dokumentieren.

**Farb - Legende:**  
 ohne Relevanz; Material fällt normalerweise bei diesen Stellen nicht an.  
 Material ist herkunftssicher, ist und für sich problemlos, Besonderheiten?  
 Nicht herkunftstypisches Material muss genau hinterfragt werden, Menge, Zustand, Ursprung muss erklärbar sein.  
 Material ist von diesem Ursprung nicht zu erwarten, genau prüfen, Identifizierbarkeit ist hoch!





www.evge.eu / EVGE criteria as of 2016

**EVGE**

HOME ABOUT US MEMBERS PRESS EVENTS **SERVICE** LEGAL FRAMEWORK

Language

- English
- Français
- Deutsch

KALENDER

JULY 2015

Sun	Mon	Tue	Wed	Thu	Fri	Sat
28	29	30	1	2	3	4
5	6	7	8	9	10	11

Welcome to the European Association of Communities for the certification of waste management companies (EVGE) eV Since 2004, we strive successfully to a high and comparable standards of waste management services in Europe. And we form a platform for the regular exchange experiences and information.

Our members are professional organizations and communities, in turn, reflect the company's full range of waste management activities.

**EVGE Brochure**

12 Communities in Germany, Austria, the Czech Republic and the Slovak Republic are organized within the EVGE - European Association of Communities for the certification of waste management companies - established in Cologne on 29.10.2004. Additional national communities in Europe are interested in membership. A major basis of each national certification is carried out in Germany, the Recycling and Waste Management Act. In Austria, the Czech Republic and Slovakia appropriate requirements have been created based on the respective national conditions and requirements. Several thousand certified by the EVGE communities Locations underline the industry's desire for high and comparable standards across Europe: A successful certification as a specialist disposal company recognized national communities.

Deutsch Français



## EVGE criteria (draft)

- documentation of suppliers and delivery processes
- inspection and evaluation of the material
- specific requirements on scrap merchants (Code of Conduct)
- inspection for artificial DNA





## Eurometrec

EUROMETREC  
EUROPEAN METAL TRADE AND RECYCLING FEDERATION

HOME | EVENTS | POSITION | FACTS & FIGURES | NEWS | MEMBERS | WASTE LAWS | EUROPE 2020 | CONTACT

[COUNTRY NAME]

- conception of a pan-European website
- regular exchange about national-level activities among member states
- respect for national sovereignty
- national associations have divergent views on the ban of cash payments



Verband Deutscher  
Metallhändler e. V.



## Ban on cash payments – debate in Germany and Austria



Verband Deutscher  
Metallhändler e. V.

- legal tender
- eliminating cash will fail to solve the problem
- eliminating cash would discriminate our industry
- stolen goods will be sold anyway – irrespective of interdictions (e.g. shift to wire fraud)
- solution: risk management for metal purchases



Verband Deutscher  
Metallhändler e. V.



**Thank you for your attention**



**[www.vdm.berlin](http://www.vdm.berlin)**